



1 Bed Flat/Apartment

1 Scutari Close
Derby
DE1 2BA

£895 Per Calendar Month

Fletcher
& Company

1 Scutari Close Derby DE1 2BA



- A Stunning Fully Furnished One Bedroom Apartment • Ground Floor • Outdoor Seating & Patio Area • Immaculate Throughout • Walking Distance To Derby City • Walking Distance To The Bus & Train Station • Available Immediately & Long Term • Integrated Dishwasher & Washing Machine/ Dryer + Fridge Freezer • Parking Available (Discuss With Branch) • Viewing Firmly Advised

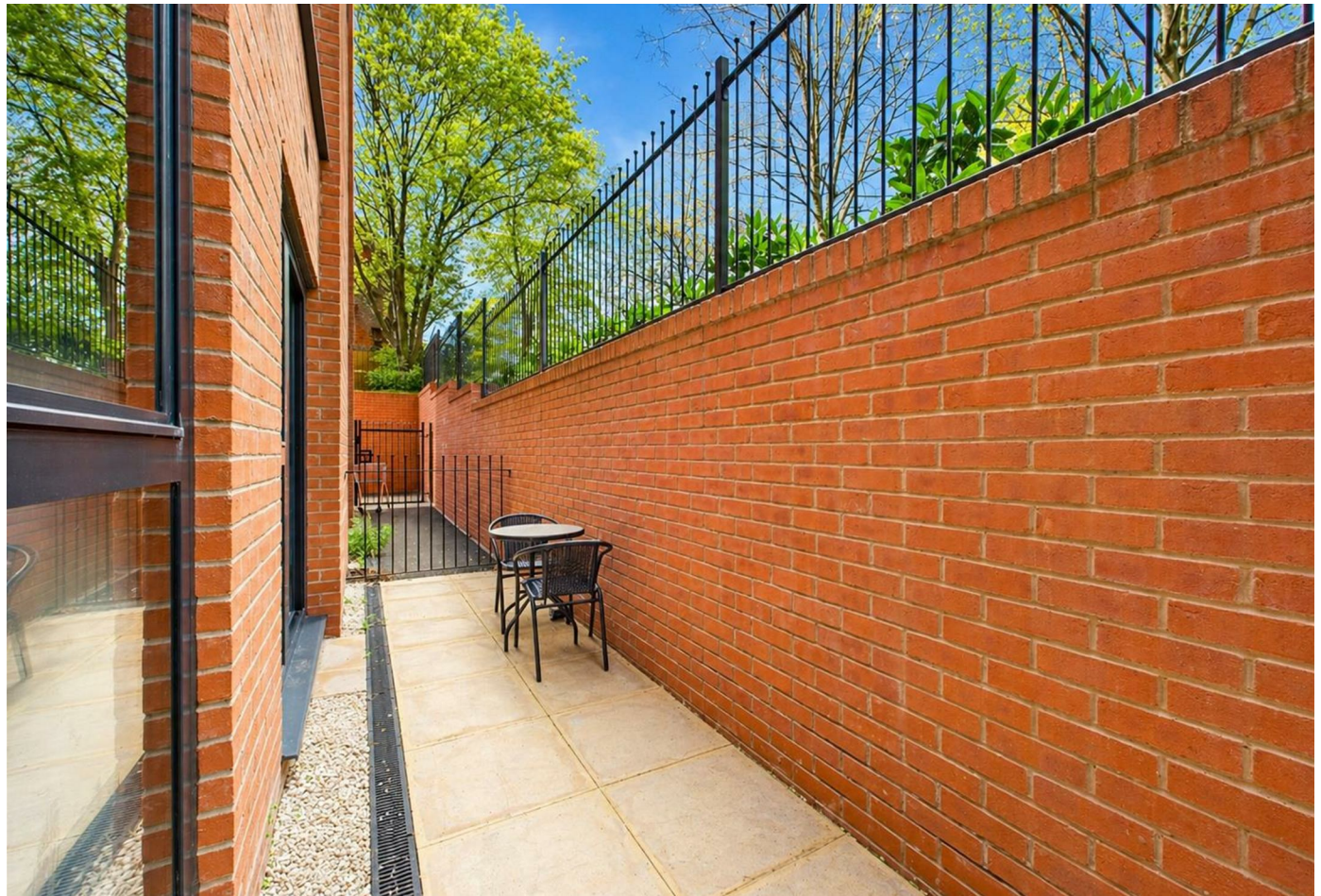
An exceptional ground floor one bedroom apartment, situated within the highly sought after Nightingale Quarter, just a short walk from Derby City Centre and its wide range of amenities.

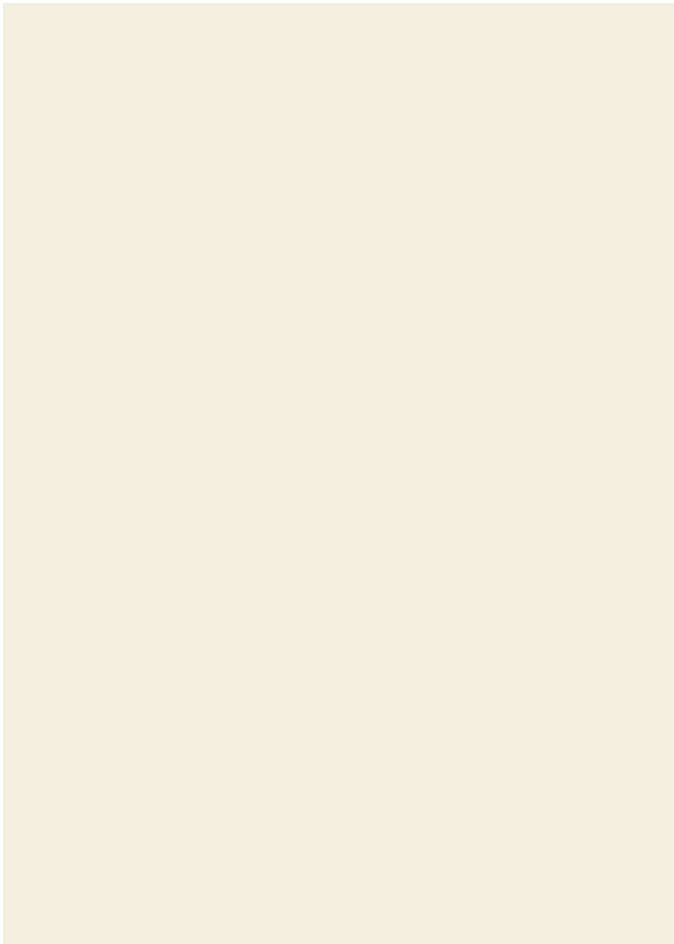
Beautifully presented throughout, the property offers a contemporary open plan living and kitchen space, thoughtfully designed to maximise both comfort and natural light. A large window creates a bright and inviting atmosphere, perfectly complementing the high-quality finish. The kitchen is superbly appointed with integrated appliances including a dishwasher, washer dryer, electric oven and hob, alongside a freestanding freezer.

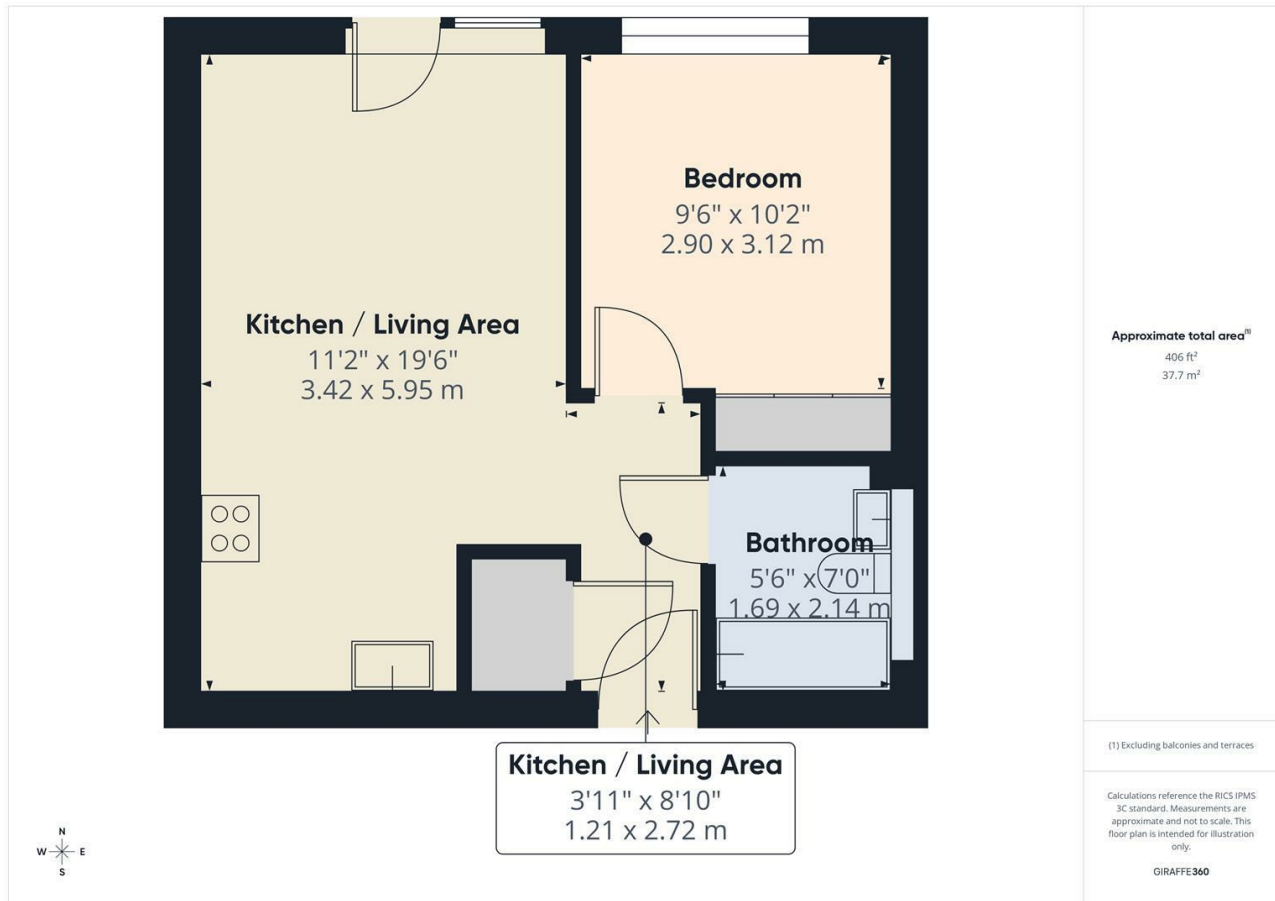
The double bedroom is generously proportioned and features a fitted mirrored wardrobe, finished with neutral carpeting to create a calm and refined space. The accommodation is completed by a stylish, fully tiled bathroom with a shower over the bath.

Offered fully furnished to an excellent standard, the property is ready for immediate occupation and ideal for modern living.

A particular feature of this apartment is the private outdoor seating area, providing a rare and valuable space for relaxation or entertaining. Parking is available by separate negotiation.



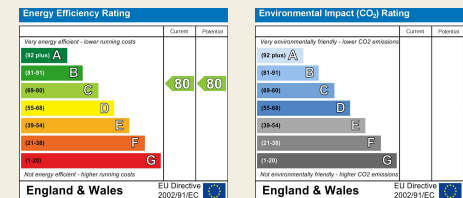




Duffield House
Town Street
Duffield
Derbyshire
DE56 4GD

T: 01332 843390

E: duffield@fletcherandcompany.co.uk
www.fletcherandcompany.co.uk



These particulars do not constitute an offer or a contract neither do they form part of an offer or contract. The vendor does not make or give and Messrs. Fletcher & Company nor any person employed has any authority to make or give any representation or warranty, written or oral, in relation to this property. Whilst we endeavour to make our sales details accurate and reliable, if there is any point which is of particular importance to you, please contact the office and we will be pleased to check the information for you, particularly if contemplating travelling some distance to view the property. None of the services or appliances to the property have been tested and any prospective purchasers should satisfy themselves as to their adequacy prior to committing themselves to purchase.

**Fletcher
& Company**